



Hello ELA families and friends,

Wintertime continues to be full of fun and learning at the ELA. We were fortunate for our playground to still be full of snow even after spending a few snow days at home. We are always prepared with either a rain suit, or in this case - a snow suit. This allows us to take advantage of the healthy benefits of being outdoors on most days.

Speaking of being prepared, families will soon receive a form titled "2024 Intentions". We need all of our families to complete this form so that we may make plans for this coming summer and fall. We appreciate your assistance with this.



Contents

| | |
|-------------------------------------|---|
| At Home Fun and Learning..... | 2 |
| Staff Spotlight..... | 2 |
| Supporting the Family..... | 3 |
| Upcoming Events..... | 4 |
| School Highlights and Features..... | 4 |



At Home Fun and Learning

Ms. Debbie shares some of her favorite books and activities

February reading list

The Mitten by Jan Brett

[AMAZON](#) [YOUTUBE](#)

The Hat by Jan Brett

[AMAZON](#) [YOUTUBE](#)

The Snowy Nap by Jan Brett

[AMAZON](#) [YOUTUBE](#)



Activity for home

MEMORY MATCHING GAME FOR KIDS TO PLAY

Quiet time play to work on focus and concentration

Staff Spotlight

Debbie McCrery - ELA Administrator

Favorite food: chocolate cake

Favorite hobby: going to 80's music concerts

Favorite Preschool book: The Mitten

Favorite color: pink

Favorite place to visit: The family lakehouse in NH,
and, of course, Disneyworld

Fun facts: Ms. Debbie has 5 pets - 2 dogs (Minnie and Blue) and 3 cats (Murphy, Betty, and Aldi). Ms. Debbie found Aldi in the grocery store parking lot, which is how she got her name, Aldi.

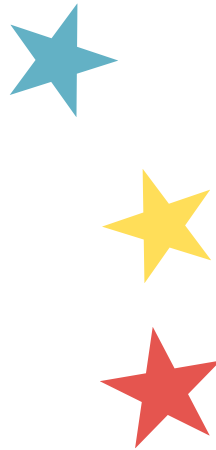


For more information on Ms. Debbie and other ELA staff members, please see our [website](#).





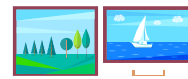
Supporting the Family





Upcoming Events

Valentine's Day is coming and each of our classrooms will be celebrating in their own unique ways. Families can check their child's Brightwheel Messages for information from their teacher on how the holiday will be celebrated.



ELA Student Art Show March 7&8



Before picking up your child(ren), you are invited to a social hour to visit with other parents and enjoy some refreshments while viewing ELA Student Artwork from all of our students at the Barry Gallery across the hall in the Reinsch Library on Thursday & Friday, **March 7&8 from 4:30PM-5:30PM**. ELA Artwork will be on display the entire week of March 4-8.



Early Learning Academy will be **closed** the following upcoming dates:

Monday, February 19 - Presidents' Day

Monday, March 25 - Friday, March 29 - Spring Break

Click [here](#) for the complete 2023-2024 school year calendar. It can also be found in your Brightwheel app under Documents.



School Highlights and Features

Since we opened our doors in October, MU students have taken part of a flourishing student program with the ELA.

Our MU students include:

2 student workers, 2 clinical experiences,
15 volunteers (many from the Spirit of Service program),
& this semester, our 1st School of Education intern!



Play
with purpose



Marymount University Early Learning Academy

Email: ela@marymount.edu

Phone: 703-284-5778

2807 N Glebe Rd.

Arlington, VA 22207

<https://marymount.edu/academics/early-learning-academy/>

