

## Wireless Network Instructions

### What you will need to connect to the wireless network:

#### \* Marymount User ID:

- If you are student and have not created your student account, please create one by going to the **Student Account Generator** and follow the screens.
- If you are faculty/staff you can generate your account by clicking here
- Guest of Marymount University will be able to login using Guest access provided on the login page.

#### \* Wireless network card (802.11b wireless network card)

- Please contact the **IT Support Services** at **(703) 526-6990** or e-mail: **its@marymount.edu** if you need assistance buying a wireless network card.

#### \* To be located in a wireless hotspot on campus

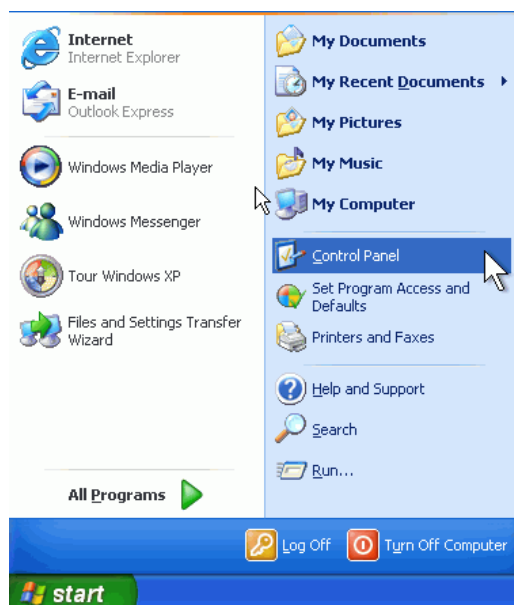
- To see a map of our wireless hotspots please Select Here

### To Connect Your Computer to the Wireless Network you must first setup your computers wireless network adapter:

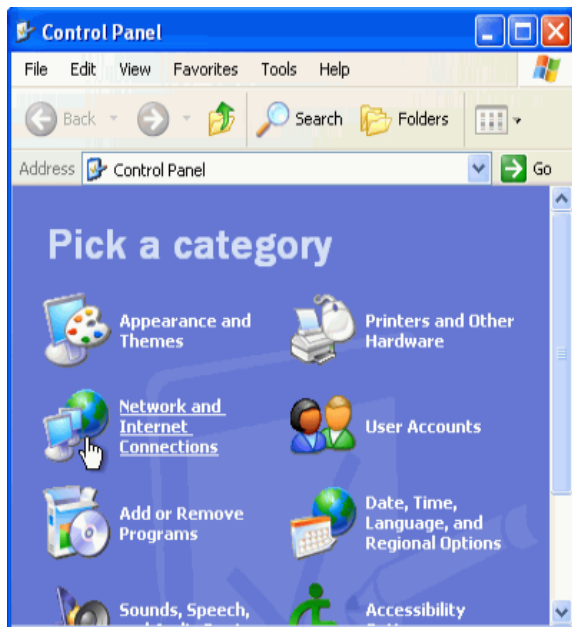
### If your adapter is already installed select here for further instructions

#### For Windows XP users:

#### Select **Start**



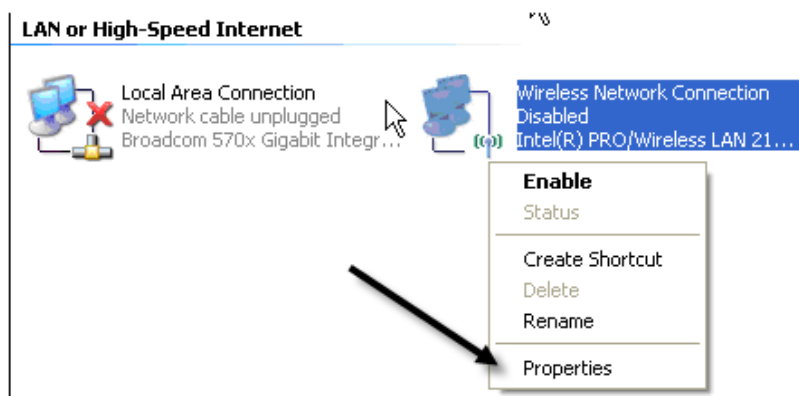
Select on **Control Panel**



Select **Network and Internet Connections**

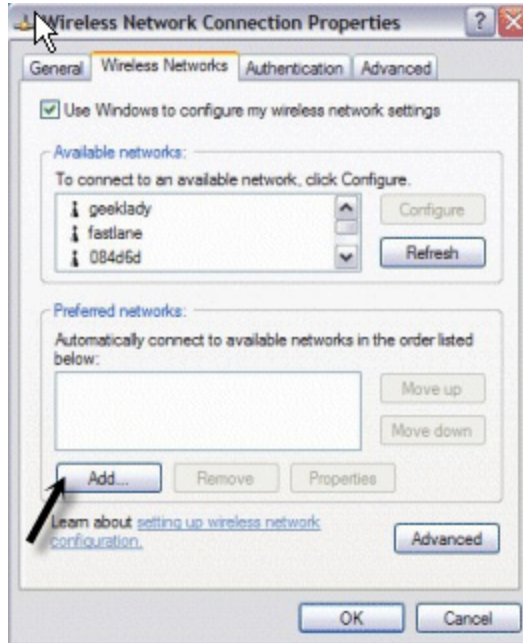


Left-click on **Network Connection**



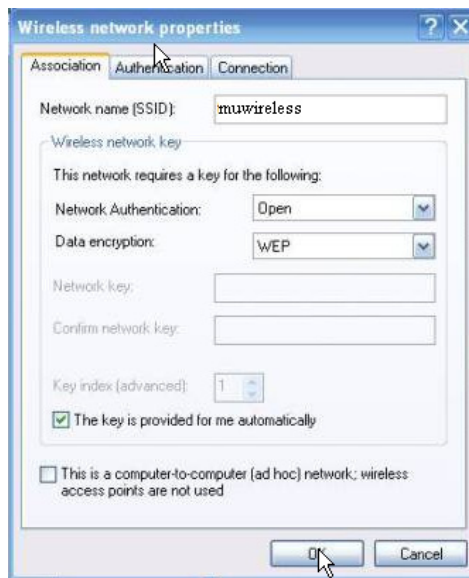
Right-click **Wireless Connection**, and select **Properties**.

- \* Under Wireless Network Connection Properties dialog box,
  - Select the **Wireless Network** tab and select **Add**.



\* Under the **Wireless Network Properties** dialog box

- Enter **Network name (SSID)** as **muwireless** (no spaces) then select **OK**.



You are now ready to connect to the Internet  
SELECT HERE

If you have any problems or questions about the installation, please contact **IT Support Services** at 703-526-6990 or at **its@marymount.edu**